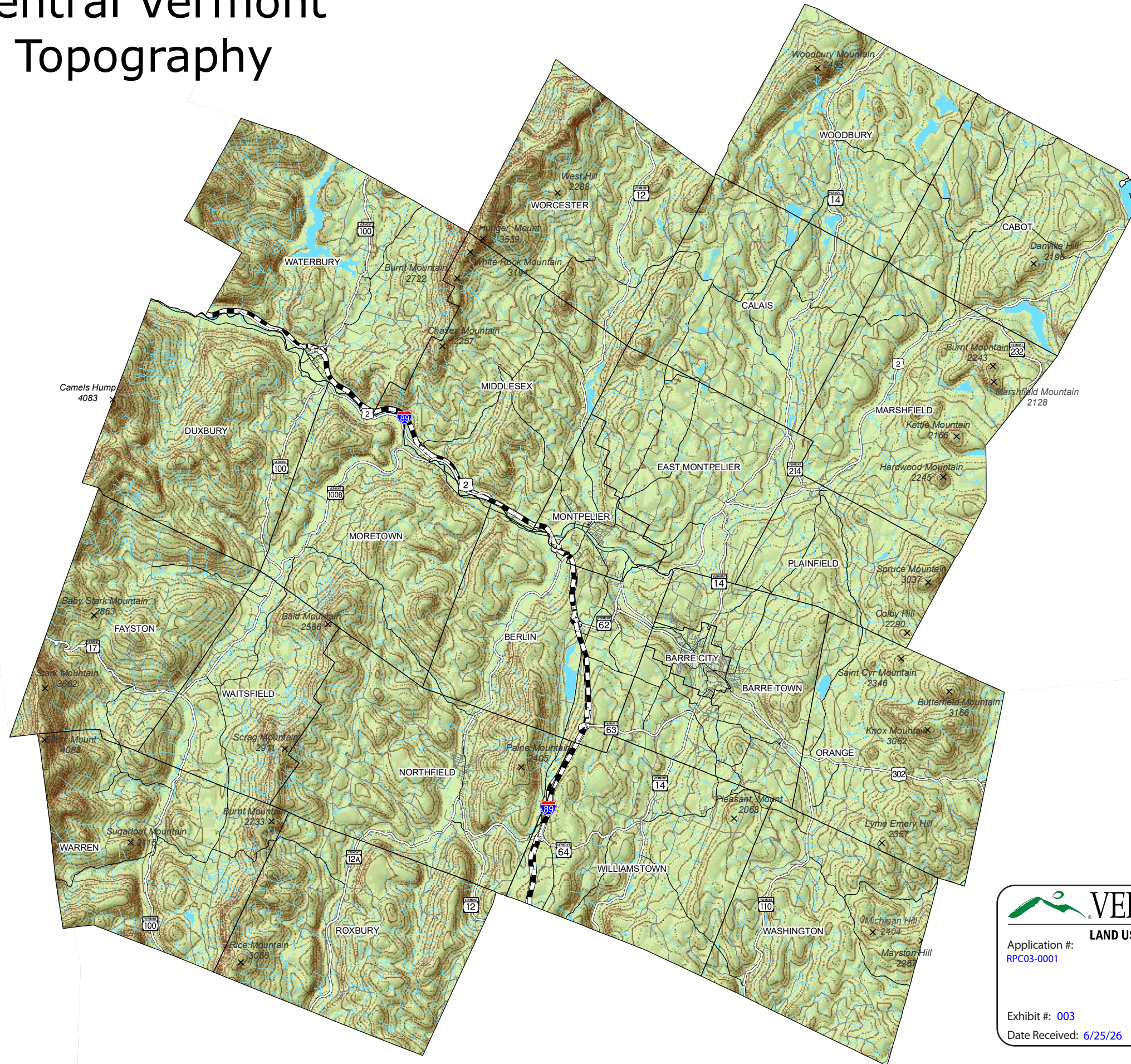


# Central Vermont Topography



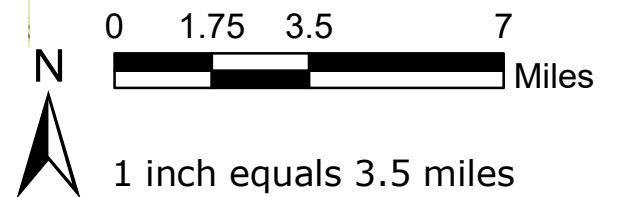
## Legend

### Roads:

- Class 1 Town Highway
- Class 2 Town Highway
- Class 3 Town Highway
- State Highway; US Highway
- ▬ Interstate
- Stream/River
- Surface Water
- × Summits

### Contours (100 ft. intervals)

- 500 - 3900 feet (odd values)
- 600 - 4000 feet; < 500 feet (even values)



Data Source:  
 Roads - VTrans, VGIS 2007  
 Surface Waters - VT Hydrologic Data, VCGI 2007  
 Regional Boundaries - VCGI 2006  
 Topologic - USGS 1999

Created 12/19/07 by CVRPC  
 M:/Region/RegionalPlan\_Update2008/GIS/  
 Maps/Topography\_HillShade.mxd

Data is only as accurate as the original source materials. This map is for planning purposes. This map may contain errors and omissions.

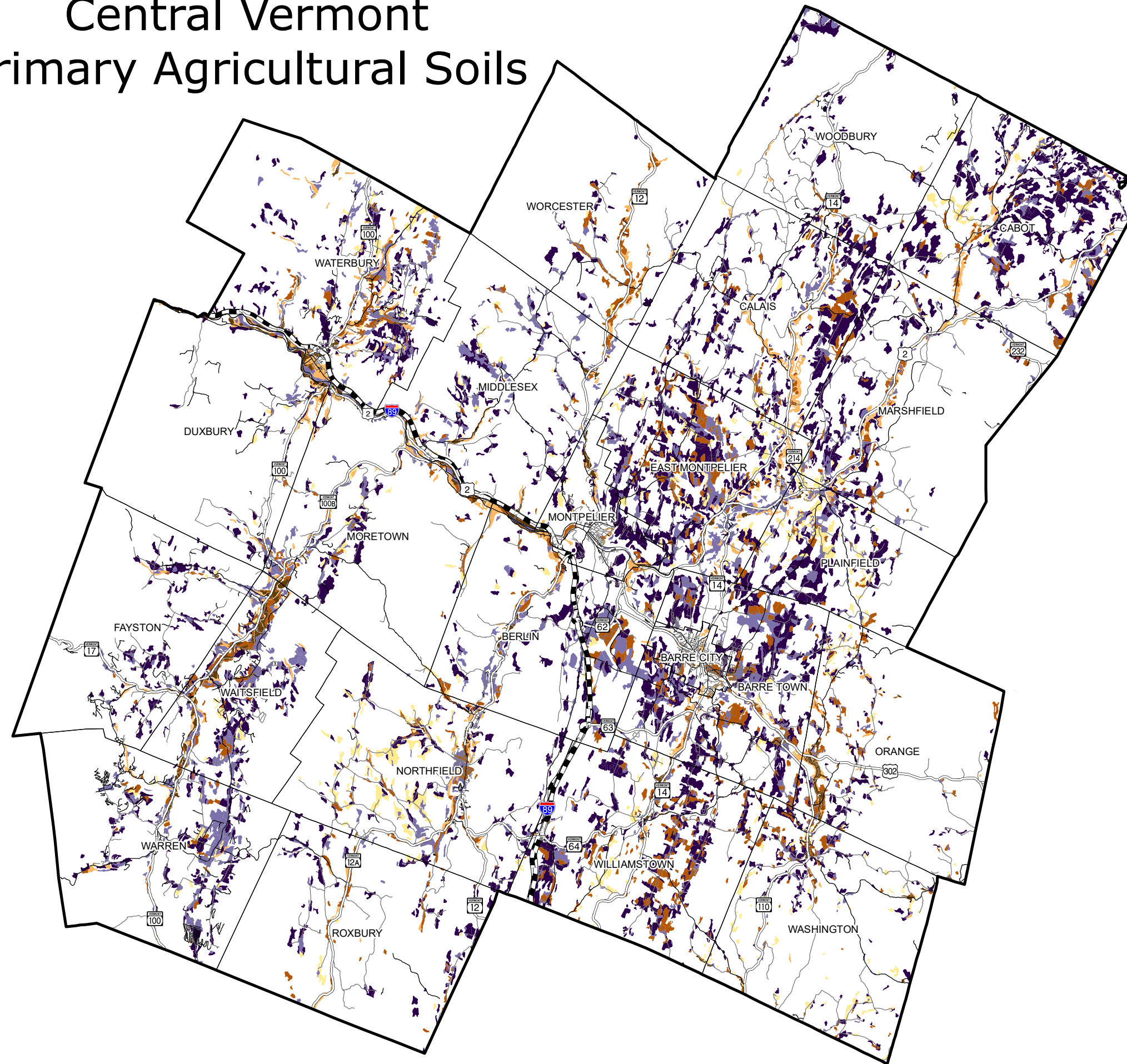
**VERMONT**  
 LAND USE REVIEW BOARD

Application #: [RPC03-0001](#)

Exhibit #: [003](#)

Date Received: [6/25/26](#)

# Central Vermont Primary Agricultural Soils



**Legend**

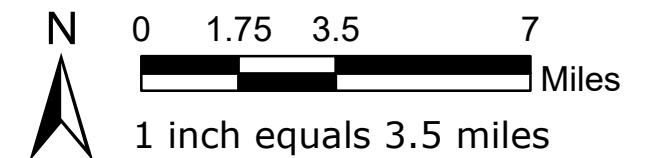
**Agricultural Value**

1 2 3 4 5 6 7

<---- Few Limitations ----- Greater Limitations ---->

**Roads:**

- Class 1 Town Highway
- Class 2 Town Highway
- Class 3 Town Highway
- State Highway; US Highway
- ▬ Interstate

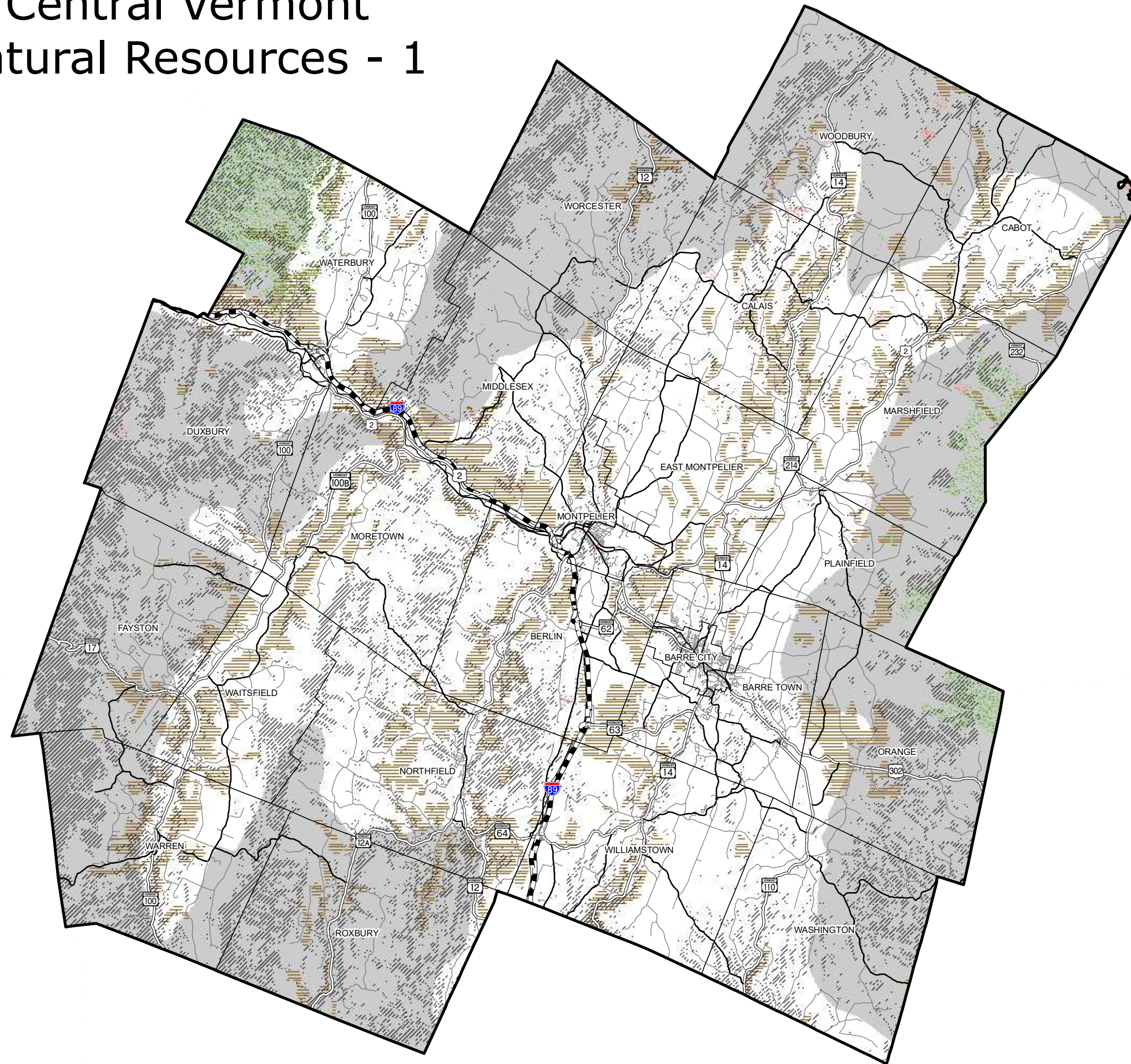


Data Source:  
 Soils - ANR 2004  
 Roads - VTrans, VGIS 2007  
 Regional Boundaries - VCGI 2006

Created 12/27/07 by CVRPC  
 M:/Region/RegionalPlan\_Update200/GIS/  
 Maps/Agricultural Soils.mxd

Data is only as accurate as the original source materials. This map is for planning purposes. This map may contain errors and omissions.

# Central Vermont Natural Resources - 1

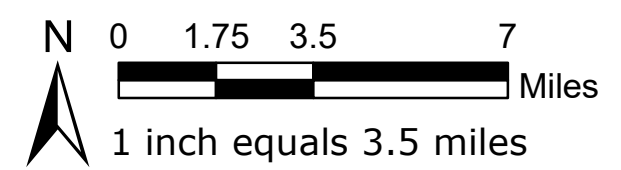


**Legend**

- Natural Communities
- Endangered Species
- Deer Wintering Habitat
- Bear Reproduction Zones
- 25% Slope or Greater

**Roads:**

- Class 1 Town Highway
- Class 2 Town Highway
- Class 3 Town Highway
- State Highway; US Highway
- Interstate

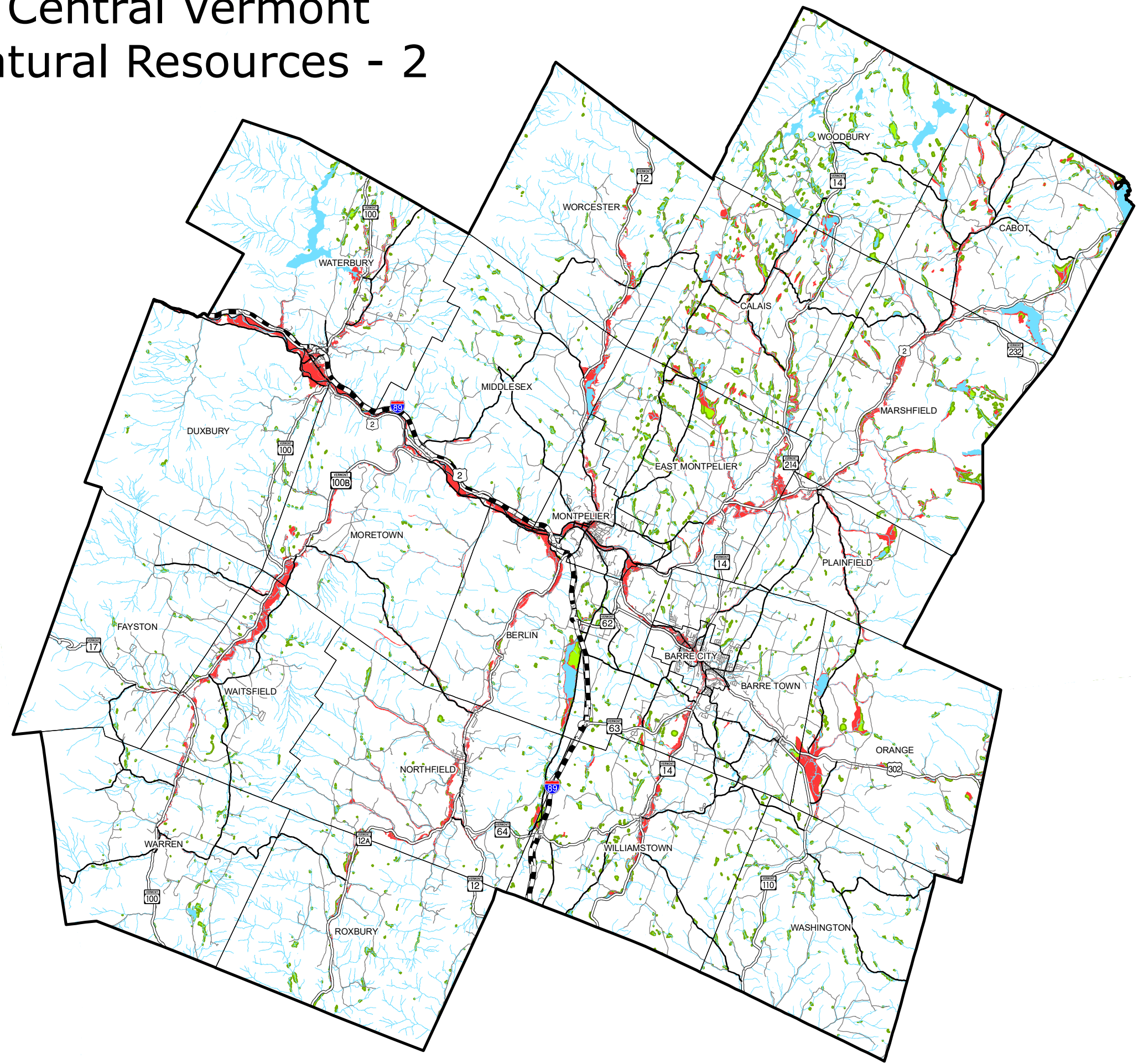


Data Source:  
 Deer Yards - ANR  
 Bear Habitat - ANR  
 Slopes - ANR  
 Roads - VTrans, VGIS 2007  
 Regional Boundaries - VCGI 2006

Created 12/27/07 by CVRPC  
 M:/Region/RegionalPlan\_Update200/GIS/  
 Maps/Natural Resources 1.mxd

Data is only as accurate as the original source materials. This map is for planning purposes. This map may contain errors and omissions.

# Central Vermont Natural Resources - 2

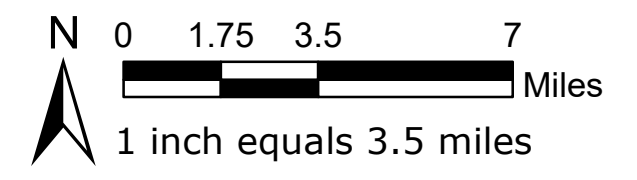


**Legend**

- Fema Floodplain
- Wetlands
- Streams/Rivers
- Surface Water

**Roads:**

- Class 1 Town Highway
- Class 2 Town Highway
- Class 3 Town Highway
- State Highway; US Highway
- Interstate






Data Source:  
 Wetlands - ANR  
 FEMA Floodplain - FEMA  
 Roads - VTrans, VGIS 2007  
 Regional Boundaries - VCGI 2006

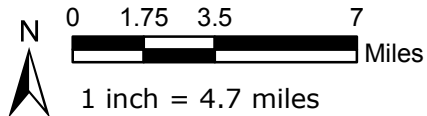
Created 3/10/08 by CVRPC  
 M:/Region/RegionalPlan\_Update200/GIS/  
 Maps/Natural Resources 2.mxd

Data is only as accurate as the original source materials. This map is for planning purposes. This map may contain errors and omissions.

# Central Vermont Natural Resources - 3

## Legend

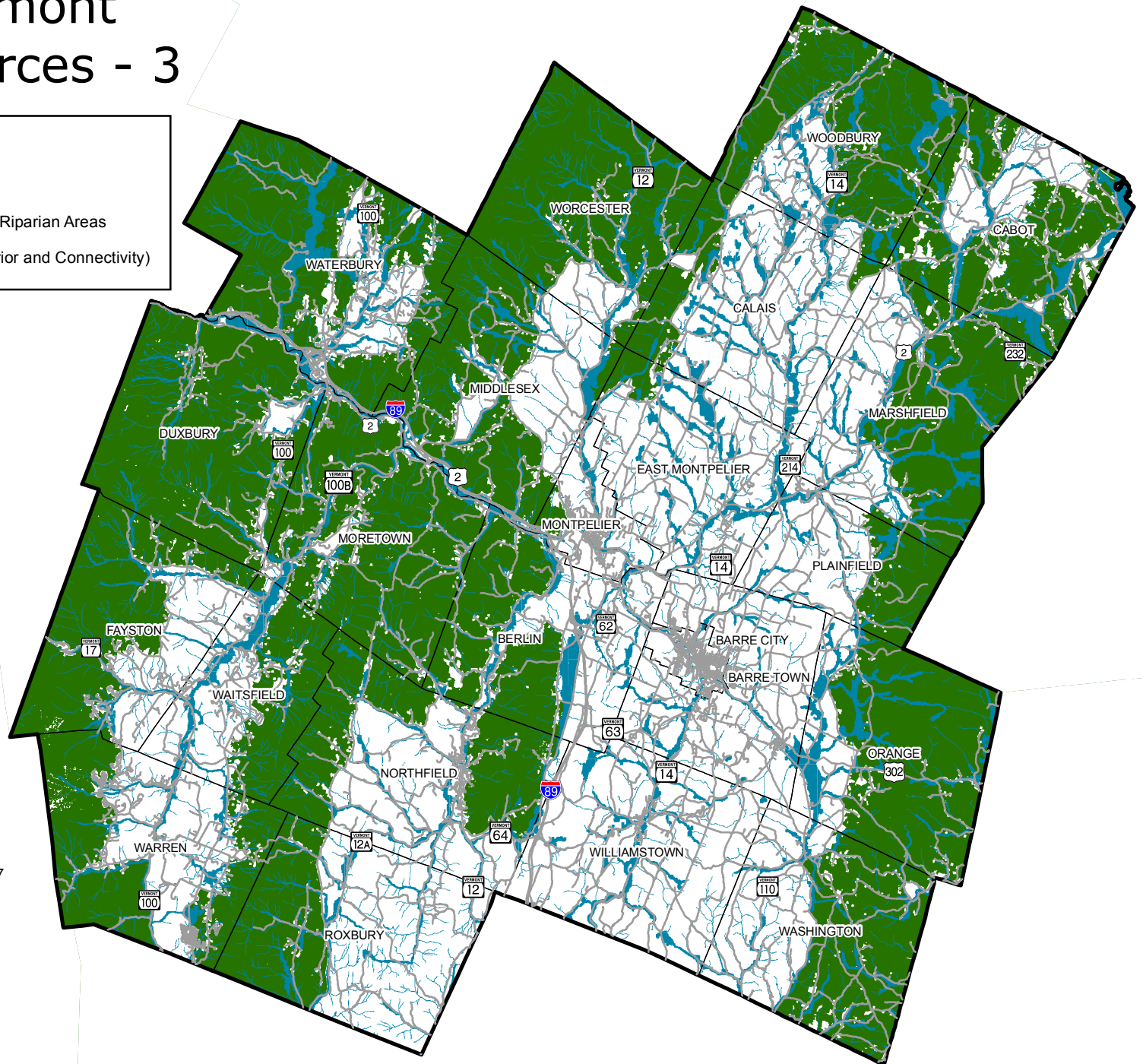
-  Roads
-  Highest Priority Surface Water and Riparian Areas
-  Highest Priority Forest Blocks (Interior and Connectivity)



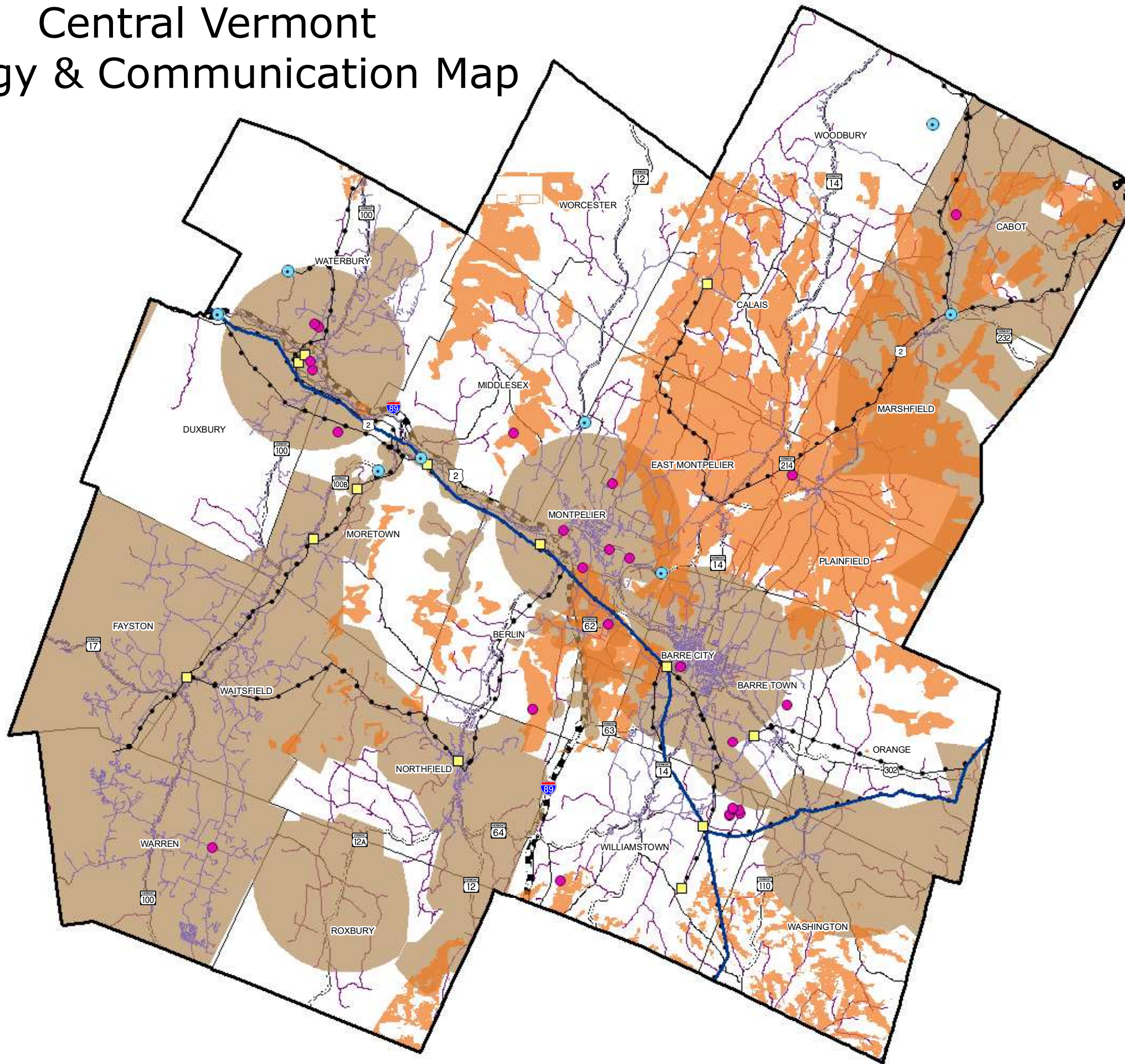
Data Source:  
 Surface Water and Riparian Areas: ANR Biofinder 2017  
 Forest Blocks: ANR Biofinder 2017  
 Roads - VTrans, 2017  
 Regional Boundaries - VCGI 2006

Created 1/18/18 by CVRPC  
 M/Regional Plan/2016 Regional Plan/  
 2017 Amendment/Land Use/Natural\_Resources3.mxd

Data is only as accurate as the original  
 source materials. This map is for planning  
 purposes. This map may contain errors  
 and omissions.



# Central Vermont Energy & Communication Map



**Legend**

**Energy Generation**

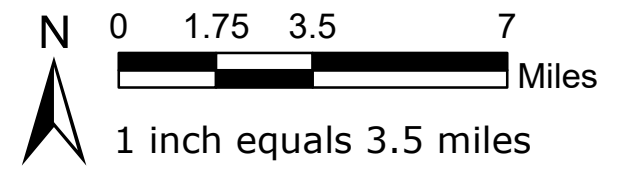
- Substations
- Hydro Plants

**Communications**

- Cell, Radio, and TV Towers
- Cable TV Lines
- Cable Modem Lines
- Wireless Service Area
- DSL Service Area
- Both Service Areas
- VELCO Transmission Lines
- Electrical Distribution Lines

**Roads:**

- Class 1 Town Highway
- Class 2 Town Highway
- Class 3 Town Highway
- State Highway; US Highway
- Interstate

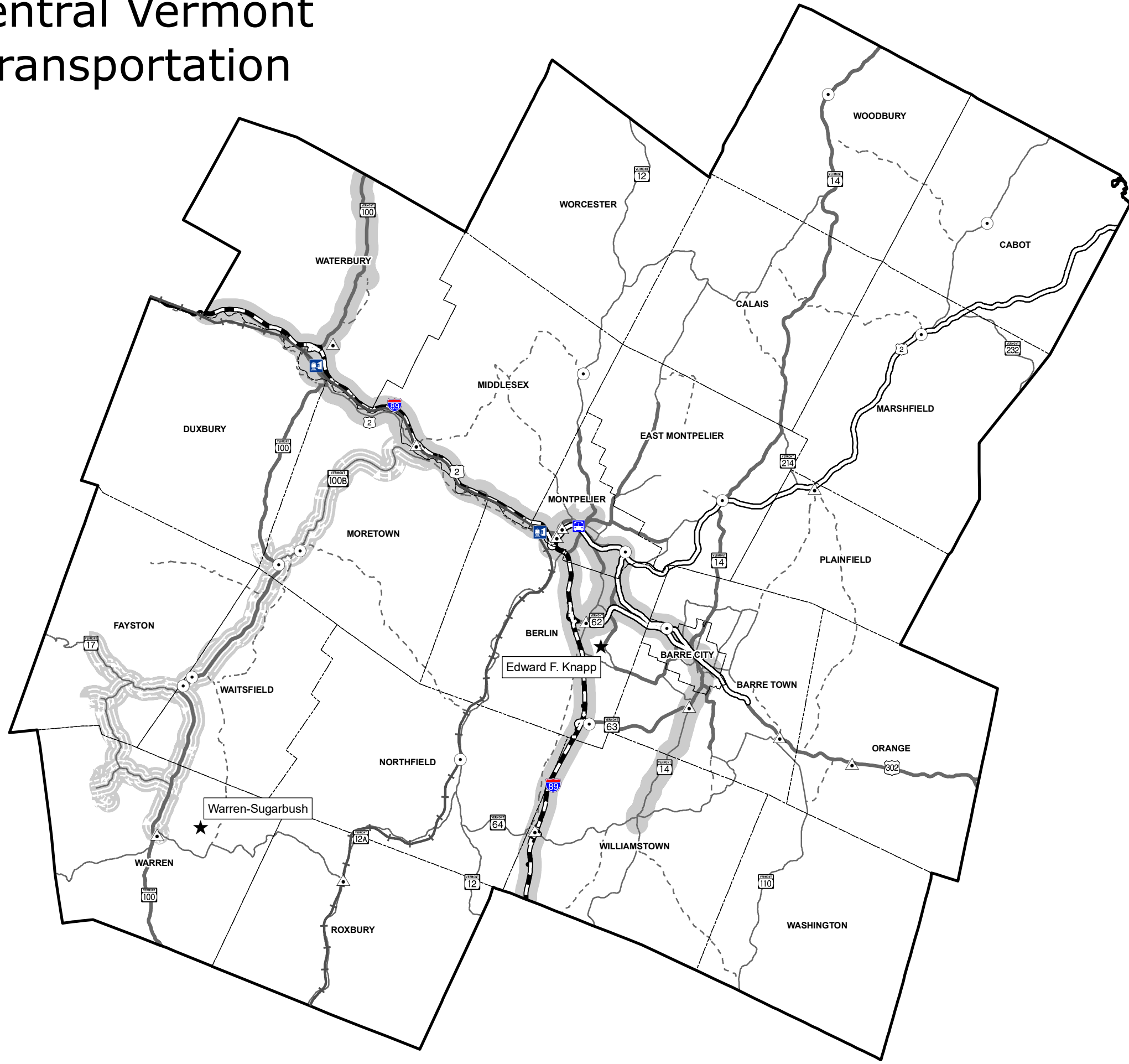


Data Source:  
 Telecommunication: Data obtained from VCGI, ANR, and CVRPC  
 Roads - VTrans, VGIS 2007  
 Tourism Trails: ANR, 2007  
 Regional Boundaries - VCGI 2006

Created 2/25/08 by CVRPC  
 M:/Region/RegionalPlan\_Update2008/GIS/Maps/Energy & Communications.mxd

Data is only as accurate as the original source materials. This map is for planning purposes. This map may contain errors and omissions.

# Central Vermont Transportation



**Legend**

**Functional Class**

- Interstate/Expressway
- Principal Arterial
- Minor Arterial
- Major Collector
- Minor Collector

**Bus Service Areas**

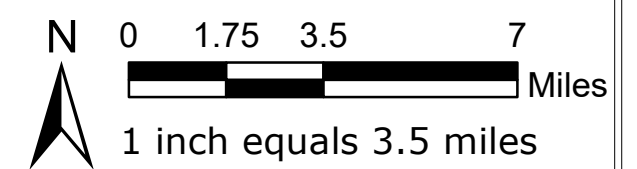
- Year Round
- Seasonal
- Vermont Transit Stop

**Park and Ride Lots**

- Existing Lots
- Future Lots

**Amtrak Route**

- Central Vermont
- Amtrak Stops

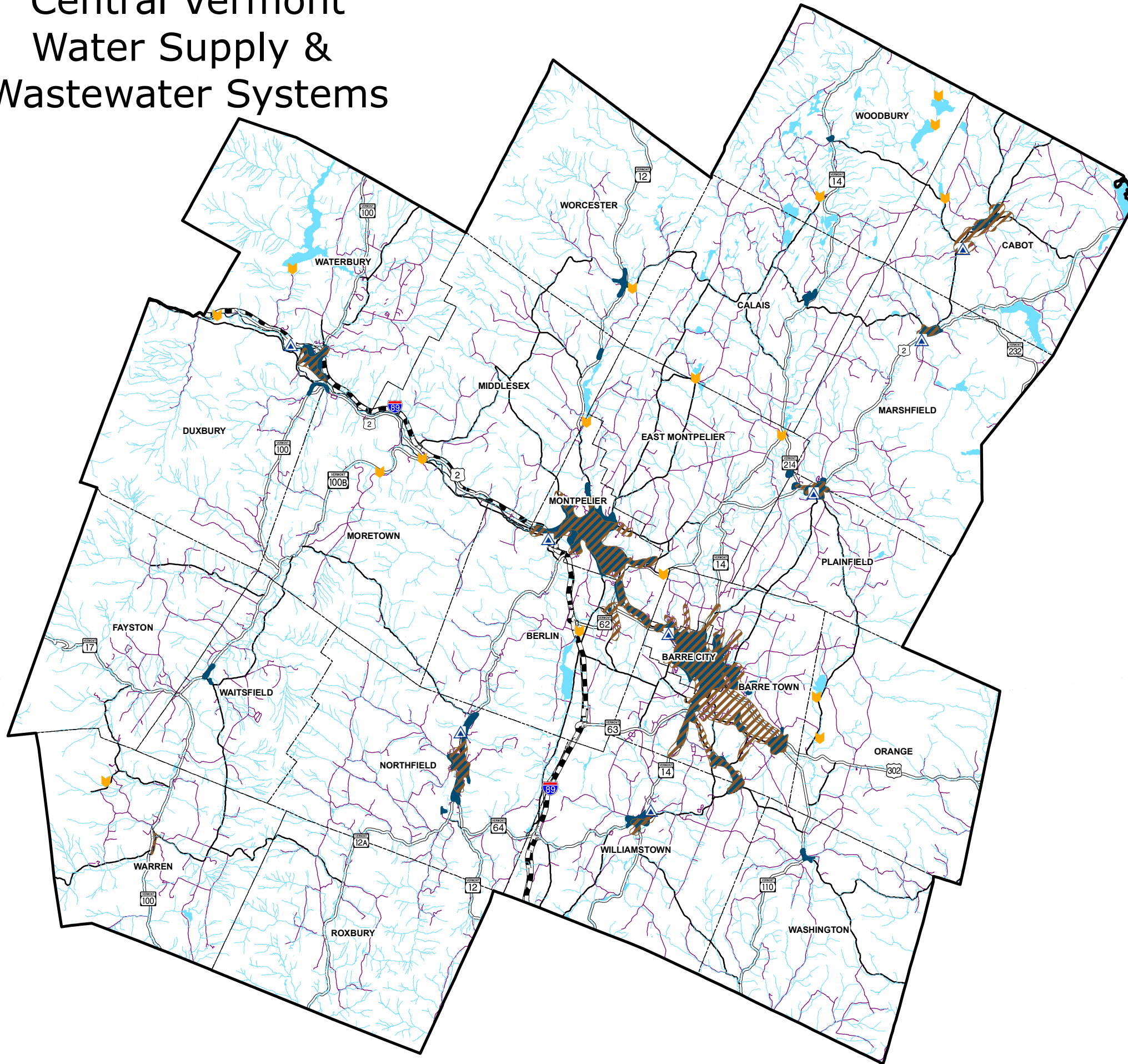


Data Source:  
Roads - VTrans, VGIS 2007  
Regional Boundaries - VCGI 2006

Created 3/10/08 by CVRPC  
M:/Region/RegionalPlan\_Update200/GIS/  
Maps/Transportation.mxd

Data is only as accurate as the original source materials. This map is for planning purposes. This map may contain errors and omissions.

# Central Vermont Water Supply & Wastewater Systems



**Legend**

**Facilities**

- Public Wastewater Treatment Plants

**Sewer & Water Service Areas**

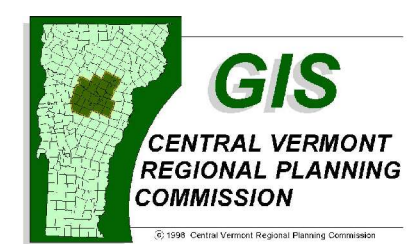
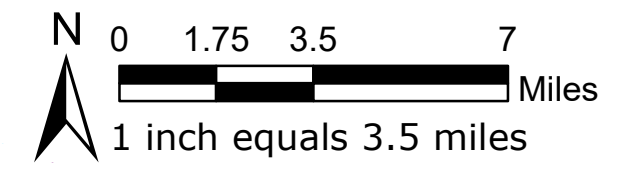
- Public Wastewater
- Public Water Supply

**Dams**

- In Service (Water Storage, Supply, & Flood Control)

**Roads**

- Class 1 Town Highway
- Class 2 Town Highway
- Class 3 Town Highway
- State Highway; US Highway
- Interstate
- Surface Water
- Stream/River

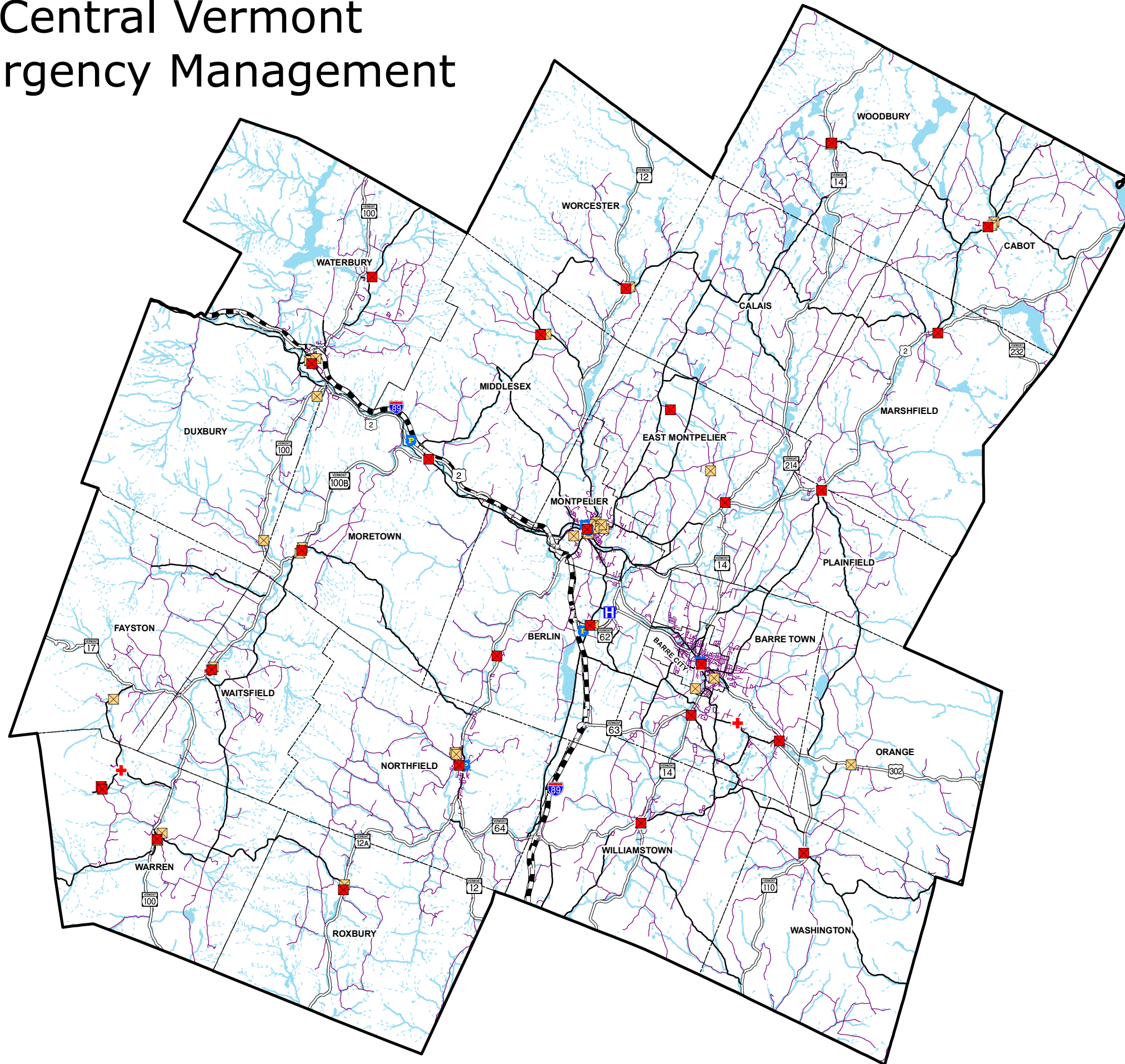


Data Source:  
Roads - VTrans, VGIS 2007  
Regional Boundaries - VCGI 2006

Created 3/10/08 by CVRPC  
M:/Region/RegionalPlan\_Update200/GIS/  
Maps/Wastewater\_Systems.mxd

Data is only as accurate as the original source materials. This map is for planning purposes. This map may contain errors and omissions.

# Central Vermont Emergency Management



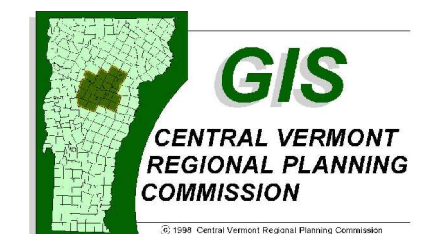
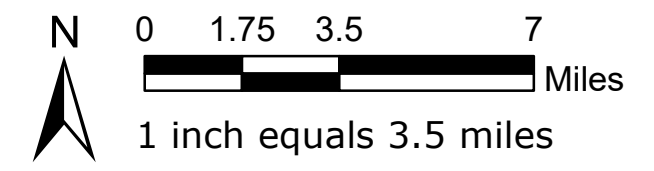
**Legend**

**Emergency Operation Facilities**

- Fire Station
- 👮 Police
- 🏥 Hospital
- ⛑ EMT Station Locations
- 🏠 Emergency Shelters

**Roads:**

- Class 1 Town Highway
- Class 2 Town Highway
- Class 3 Town Highway
- State Highway; US Highway
- Interstate

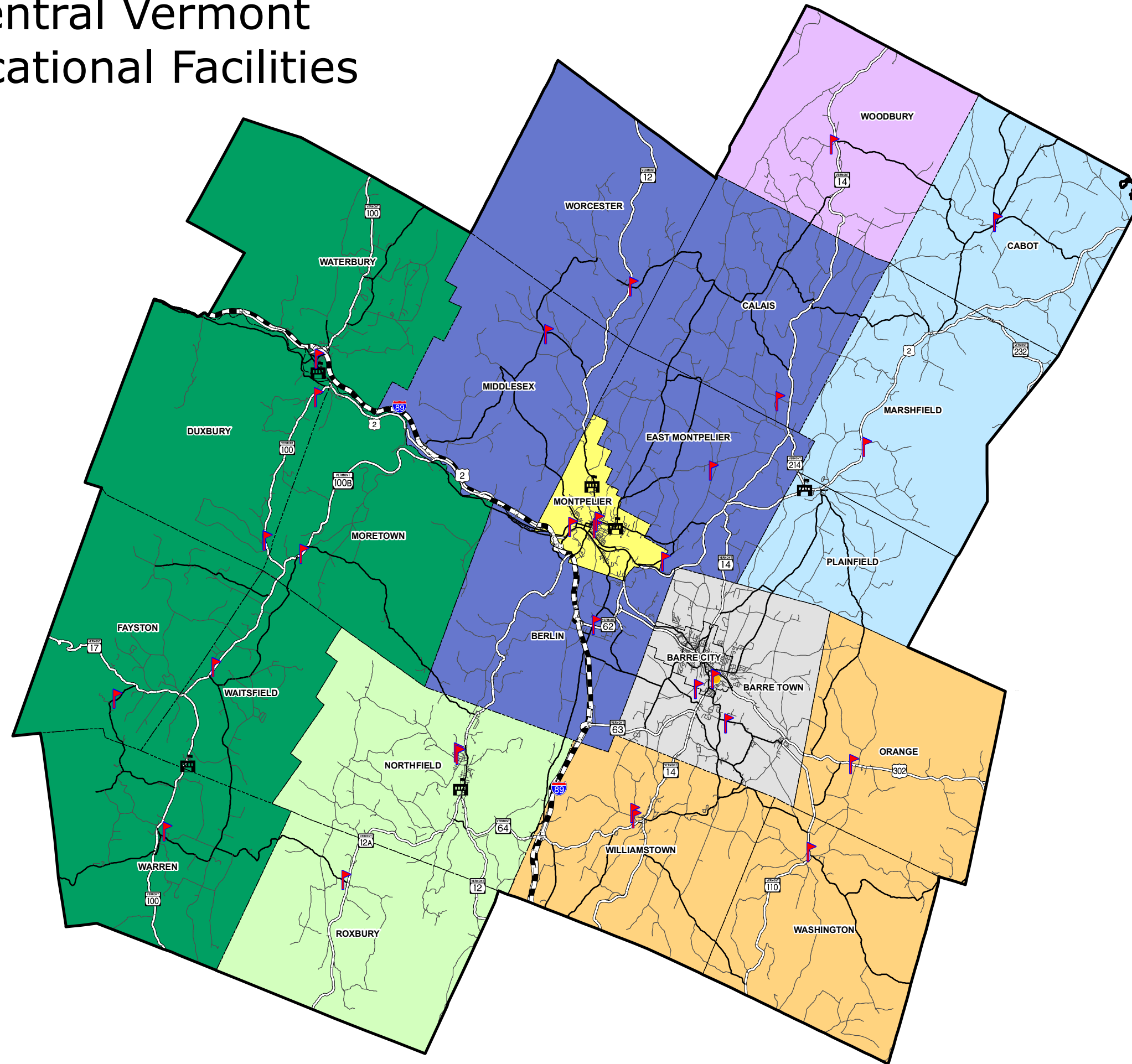


Data Source:  
 Emergency Operations Facilities - CVRPC, 2007  
 Roads - VTrans, VGIS 2007  
 Regional Boundaries - VCGI 2006

Created 2/29/08 by CVRPC  
 M:/Region/RegionalPlan\_Update2008/GIS/  
 Maps/Emergency\_Management.mxd

Data is only as accurate as the original source materials. This map is for planning purposes. This map may contain errors and omissions.

# Central Vermont Educational Facilities



## Legend

### School Districts

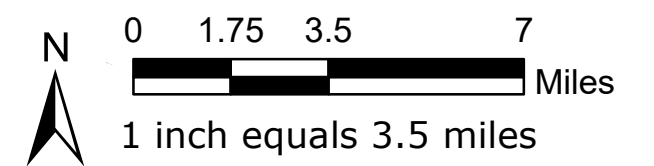
- Barre Town/City
- Montpelier School District
- Orange North
- Orleans Southwest
- Washington Central
- Washington Northeast
- Washington South
- Washington West

### Public Schools

- Elementary, Middle, High School
- College / Post Secondary School
- Vocational School

### Roads:

- Class 1 Town Highway
- Class 2 Town Highway
- Class 3 Town Highway
- State Highway; US Highway
- Interstate

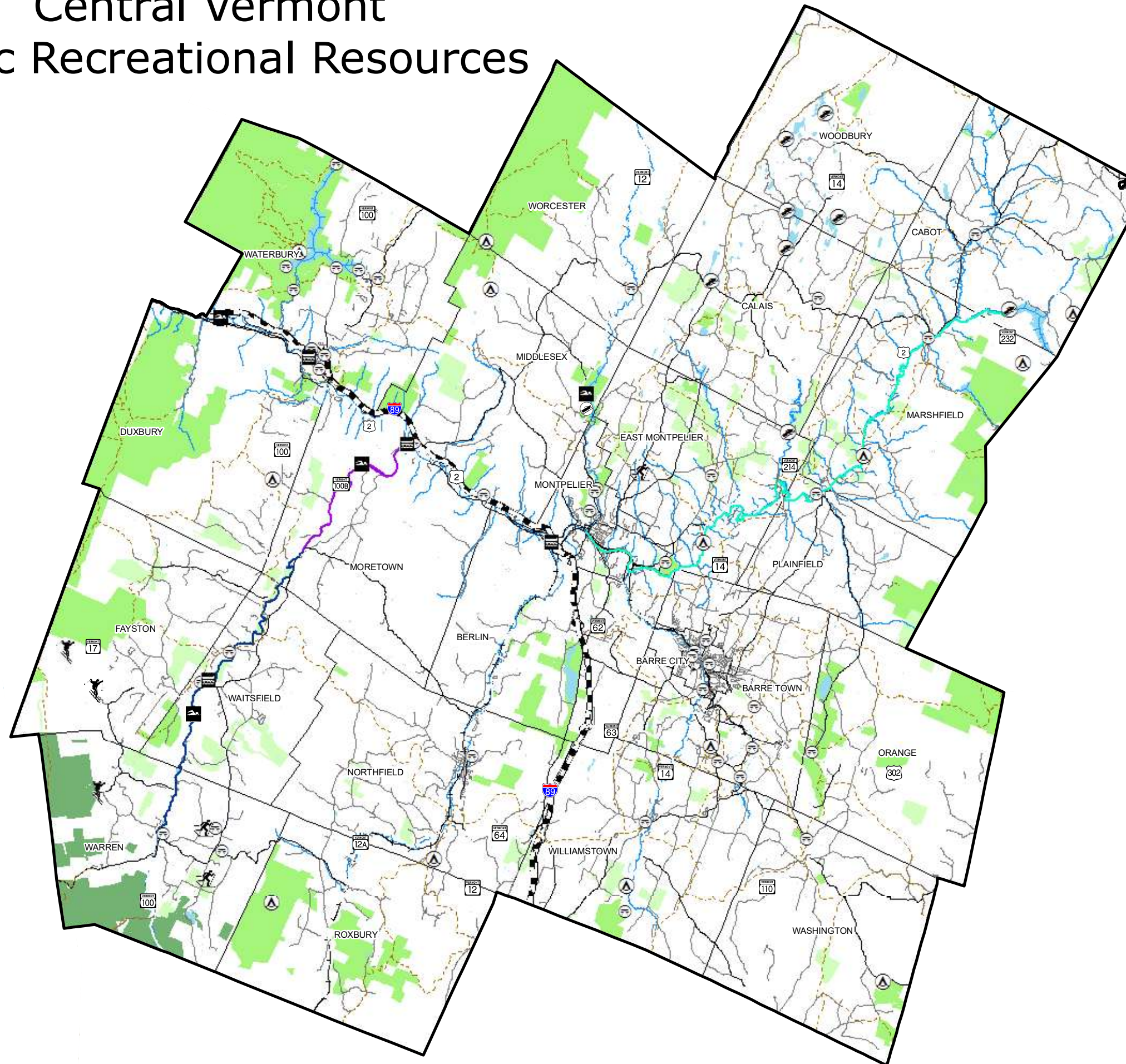


Data Source:  
 School Districts & Facilities - VCGI, 2007  
 Roads - VTrans, VGIS 2007  
 Regional Boundaries - VCGI 2006

Created 12/27/07 by CVRPC  
 M:/Region/RegionalPlan\_Update200/GIS/  
 Maps/Educational\_Facilities.mxd

Data is only as accurate as the original source materials. This map is for planning purposes. This map may contain errors and omissions.

# Central Vermont Public Recreational Resources



### Legend

**Conserved Lands**

- Green Mountain National Forest
- State and Municipal Public Lands
- Private Conserved Lands

**Recreational Sites**

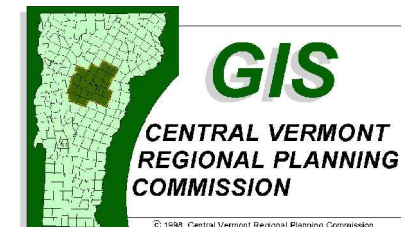
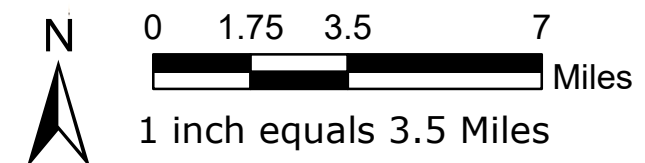
- Alpine Skiing
- Nordic Skiing
- Boat & Fishing Access (Lakes, Ponds, & Marshes)
- Swimming Areas
- Canoe Access
- Public Campgrounds
- Public Recreational Fields & Parks
- Trails (VAST, Long Trail, Catamount Trail, etc.)

**Recreational River Uses**

- Expert Kayaks & Open Boats
- Mixed / Whitewater Rapids
- Open Boats

**Roads:**

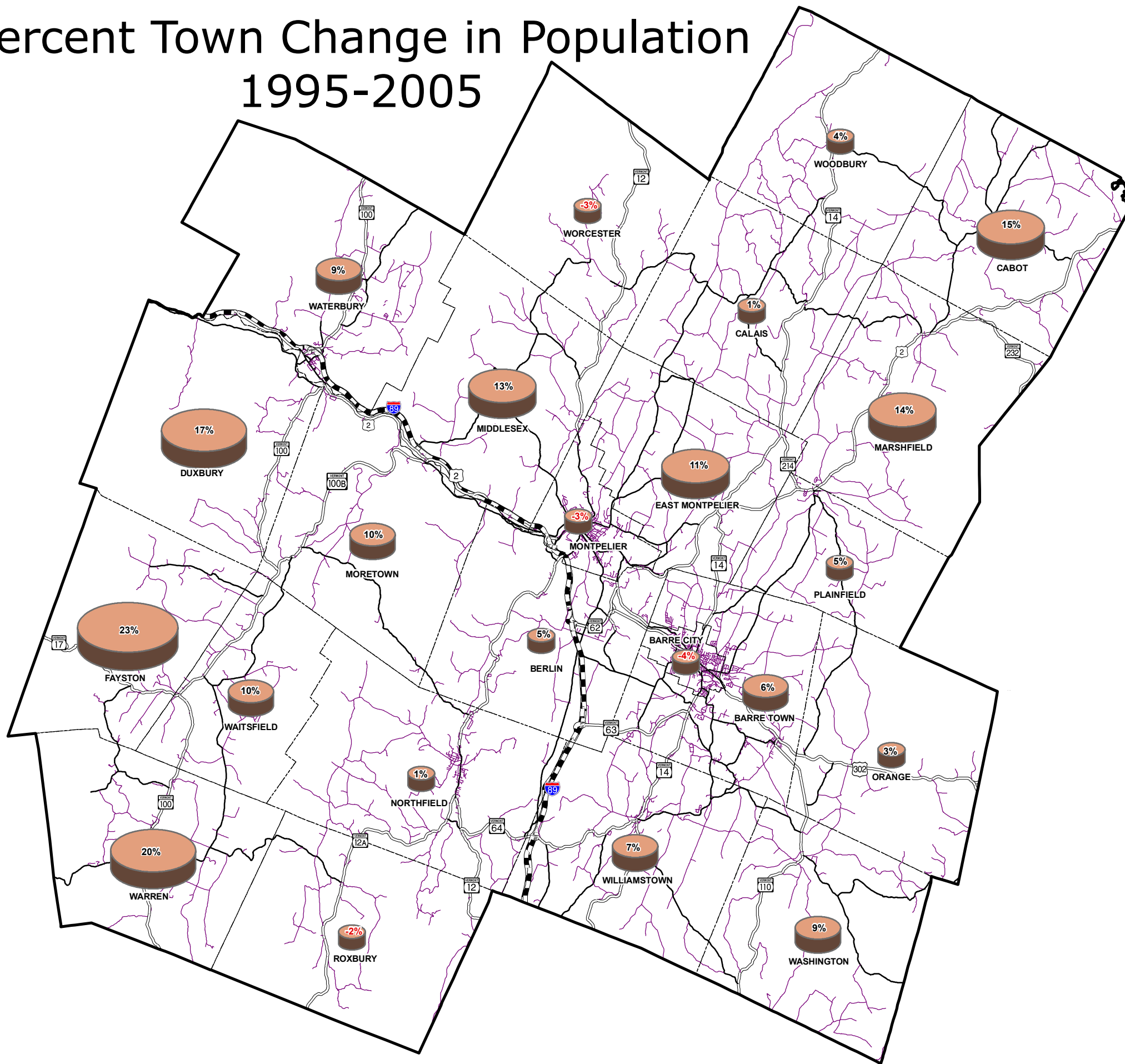
- Class 1 Town Highway
- Class 2 Town Highway
- Class 3 Town Highway
- State Highway; US Highway
- Interstate



Data Source:  
 Conserved Lands: UVM, 2005  
 Recreational Sites: VCGI, 2007  
 Recreational River Reaches: ANR, 2007  
 Roads - VTrans, VGIS 2007  
 Tourism Trails: ANR, 2007  
 Created 2/25/08 by CVRPC  
 M:/Region/RegionalPlan\_Update2008/GIS/  
 Maps/Public Recreational Resources.mxd

Data is only as accurate as the original source materials. This map is for planning purposes. This map may contain errors and omissions.

# Central Vermont Percent Town Change in Population 1995-2005



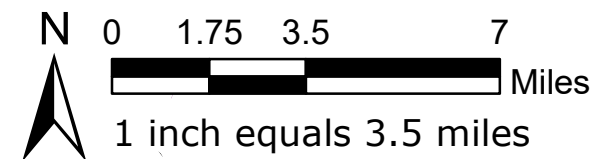
**Legend**

**% Town Population Change 1995 - 2005**

- 4% - + 5%
- 6% - 10%
- 11% - 15%
- 16% - 20%
- 21% - 25%

**Roads:**

- Class 1 Town Highway
- Class 2 Town Highway
- Class 3 Town Highway
- State Highway; US Highway
- Interstate

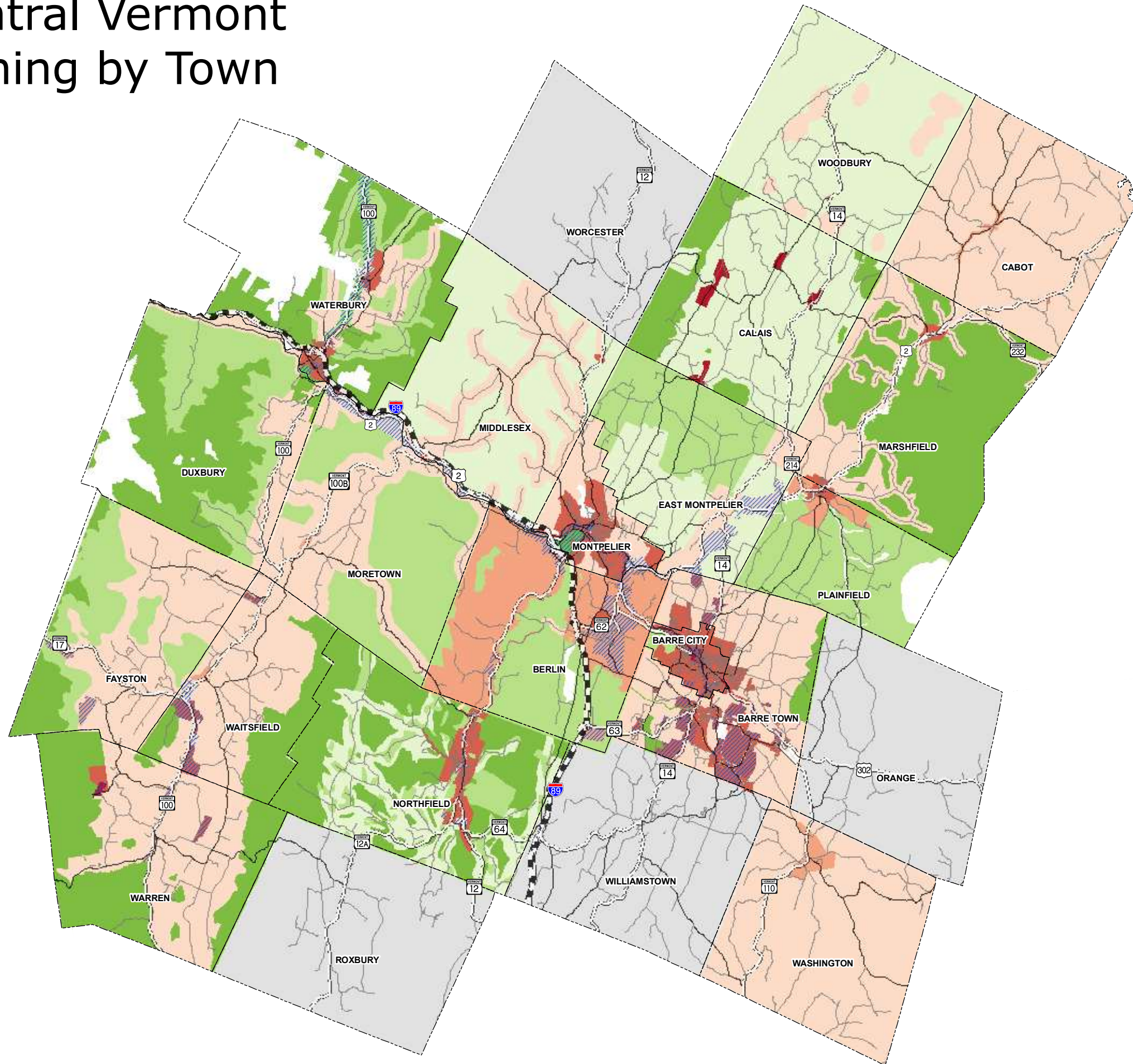


Data Source:  
 Population : Percent change was calculated use the Vermont Department of Health 1995 and 2005 population values.  
 Roads - VTrans, VGIS 2007  
 Regional Boundaries - VCGI 2006

Created 12/27/07 by CVRPC  
 M:/Region/RegionalPlan\_Update200/GIS/Maps/Population\_changes.mxd

Data is only as accurate as the original source materials. This map is for planning purposes. This map may contain errors and omissions.

# Central Vermont Zoning by Town



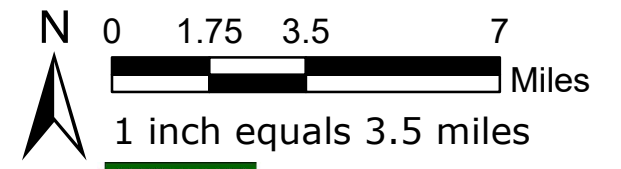
### Legend

**Residential Zoning by Density**

- No Development
- No Minimum Lot Size
- 0 - 0.49 Acres
- 0.5 - 0.99 Acres
- 1 - 2.99 Acres
- 3 - 4.99 Acres
- 5 - 9.99 Acres
- 10 and Greater Acres

**Commercial Zoning by Density**

- No Development
- No Minimum Lot Size
- 0 - 0.49 Acres
- 0.5 - 0.99 Acres
- 1 - 2.99 Acres
- 3 - 4.99 Acres
- 5 - 9.99 Acres
- 10 and Greater Acres
- No Zoning



Data Source:  
 Zoning: Data obtained from Towns and CVRPC  
 Roads - VTrans, VGIS 2007  
 Regional Boundaries - VCGI 2006

Created 3/11/08 by CVRPC  
 M:/Region/RegionalPlan\_Update200/GIS/Maps/CVRegion\_Zoning.mxd

Data is only as accurate as the original source materials. This map is for planning purposes. This map may contain errors and omissions.