

Rutland Regional Plan Update

EQUITY ANALYSIS



Rutland Regional Planning Commission's Vision

Healthy

A healthy community is one where individuals have access to healthy built, social, economic, and natural environments that give them the opportunity to live their fullest potential.

Equitable

Today's planners must center equity as the foundation of all decisions made within a community. As a core planning value, equity has multiple dimensions – distributional, procedural, and structural.

Resilient

A resilient community has the ability to withstand, respond and adapt to challenges. Challenges can include anything that makes a community vulnerable – from natural disasters to economic, social, and political upheaval.

Equity Analysis

Examining how we got here and where we are going

Historic Context of Inequities

To understand existing inequities we must look at historic context.

Identifying and Documenting Current Inequities

Inequities exist in multiple areas and are exacerbated by factors identified by the social determinates of health. Analyze current data and trends.



Centering Purpose

Center priority populations for more equitable distribution of benefits and burdens.

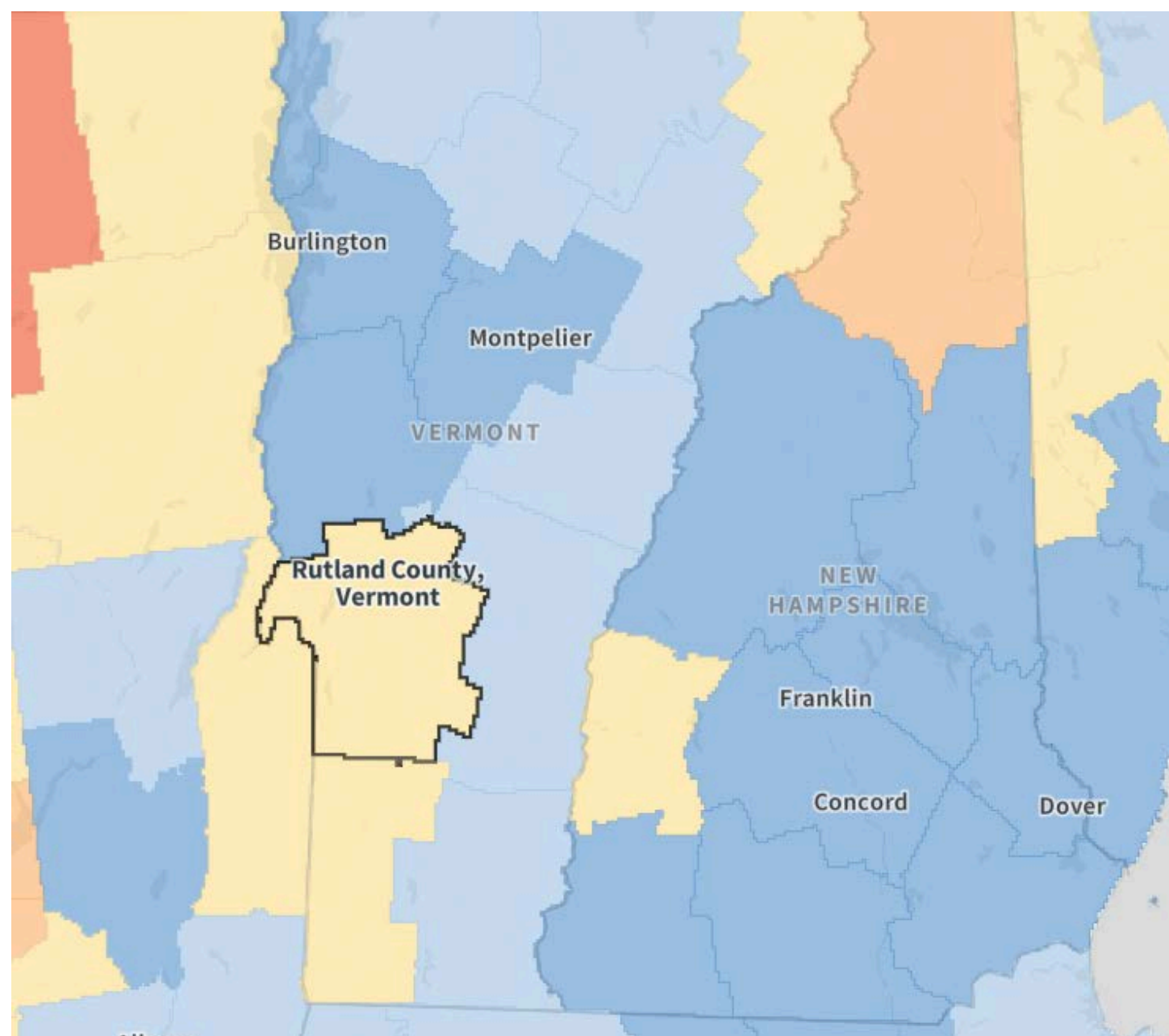
Advancing Equitable Impacts

What organizational changes can be made to support a more equitable region?

Historic Context of Inequities

- Health Care Access and Quality
 - Until 1957 Vermont practiced eugenics or sterilization of targeted people
 - Over 250 people living in poverty, people with disabilities, Native American, people with mixed racial ancestry were sterilized without consent by medical professionals
- Neighborhood and Built Environment, Educational Access & Economic Stability
 - Rural and poor communities have struggled with access to transportation and healthcare
 - Past and existing zoning limits multi-family housing that impacts lower income residents access to housing and K-12 education
- Social and Community Context
 - Historically, people of color have had limited population representation within the state of Vermont
 - Marginalized communities have been underrepresented during planning processes

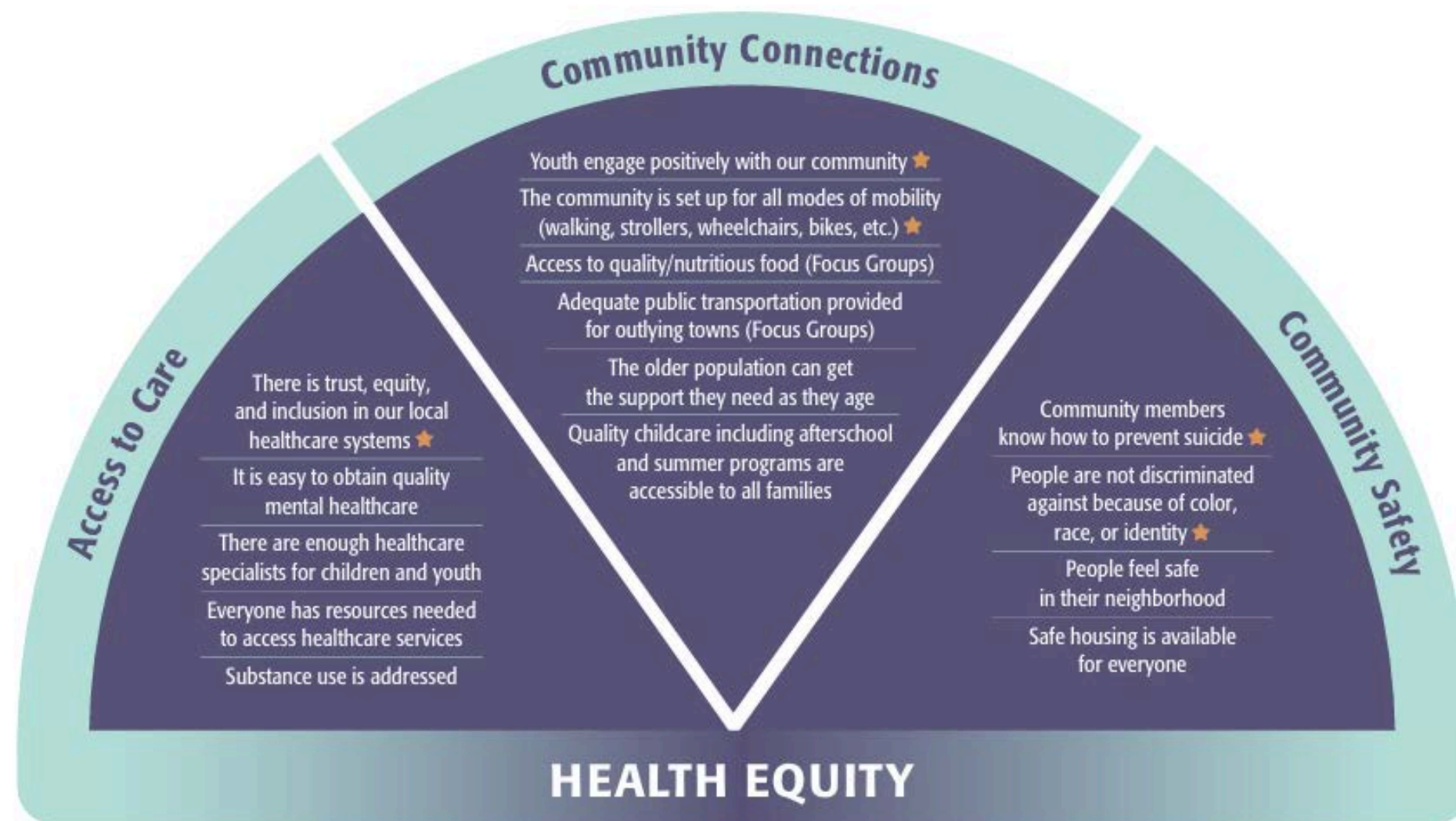
Identifying & Documenting Inequities



- 68% of the population lives in rural areas
- Average income of \$62,641
- 13% of children live in poverty compared to 11% for Vermont
- Women 45-54 make up the largest population of people living in poverty
- 3rd Healthiest State in 2023 down from 1st in 2019 due to high rates of youth with adverse childhood experiences and a high prevalence of excessive drinking
- Rutland County has a statewide county ranking of 10 out of 14 for Health Outcomes and Behaviors
- Rutland County is considered mid-tier with a Distressed Communities Index score that ranks 13 out of 14 counties in Vermont

Identifying & Documenting Inequities

Priority populations identified were: people of color, youth, older Vermonters, people living with disabilities, people living in rural communities, people who identify in the LGBTQIA2S+ community, and people who make under the median income level.



★ Indicates priority populations have identified these indicators as a high priority.

Rural communities experience significant health disparities. Health disparities are differences in health status when compared to the population overall, often characterized by indicators such as higher incidence of disease and/or disability, higher mortality rates, lower life expectancies, and higher rates of chronic pain. Rural risk factors for health disparities include: geographic isolation, lower socioeconomic status, higher rates of health risk behaviors, limited access to healthcare specialists and subspecialists, and limited job opportunities.

Social Determinants of Health



What Matters Most?

- Transparency and accountability
- Explaining WHY health equity is important and WHY we need to engage with priority communities

- Centering equitable community engagement
- Using community engagement as a tool to support health equity

- Developing an understanding of barriers to engagement and how those barriers can be mitigated more effectively
- Curating resources and partnerships to develop an approach to engagement that reaches everyone

Clarifying the Purpose

Advancing Equitable Impacts



Continue to Analyze:

- How can we obtain an accurate representation of the population and identify communities of concern?
- How can all voices be heard, participate, and engage in the planning process and create space for their involvement?
- Are those most burdened or affected by the plan part of the dialogue?
- What needs exist for each of our communities?
- Are there inequities in the outcomes experienced by the Region's community members?
- Are opportunities for engagement on the plan provided in an equitable manner? Are these opportunities available to all members of the population – regardless of location, ability, income, language, etc.?
- How will future actions deliver equitable outcomes, benefits and burdens?
- How will progress toward equitable outcomes be monitored and measured?