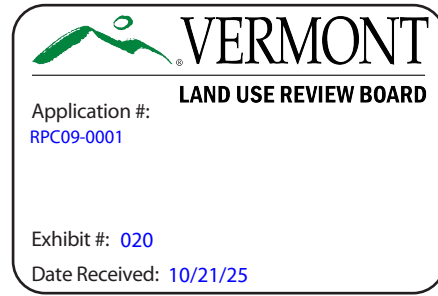


Killington Village Development

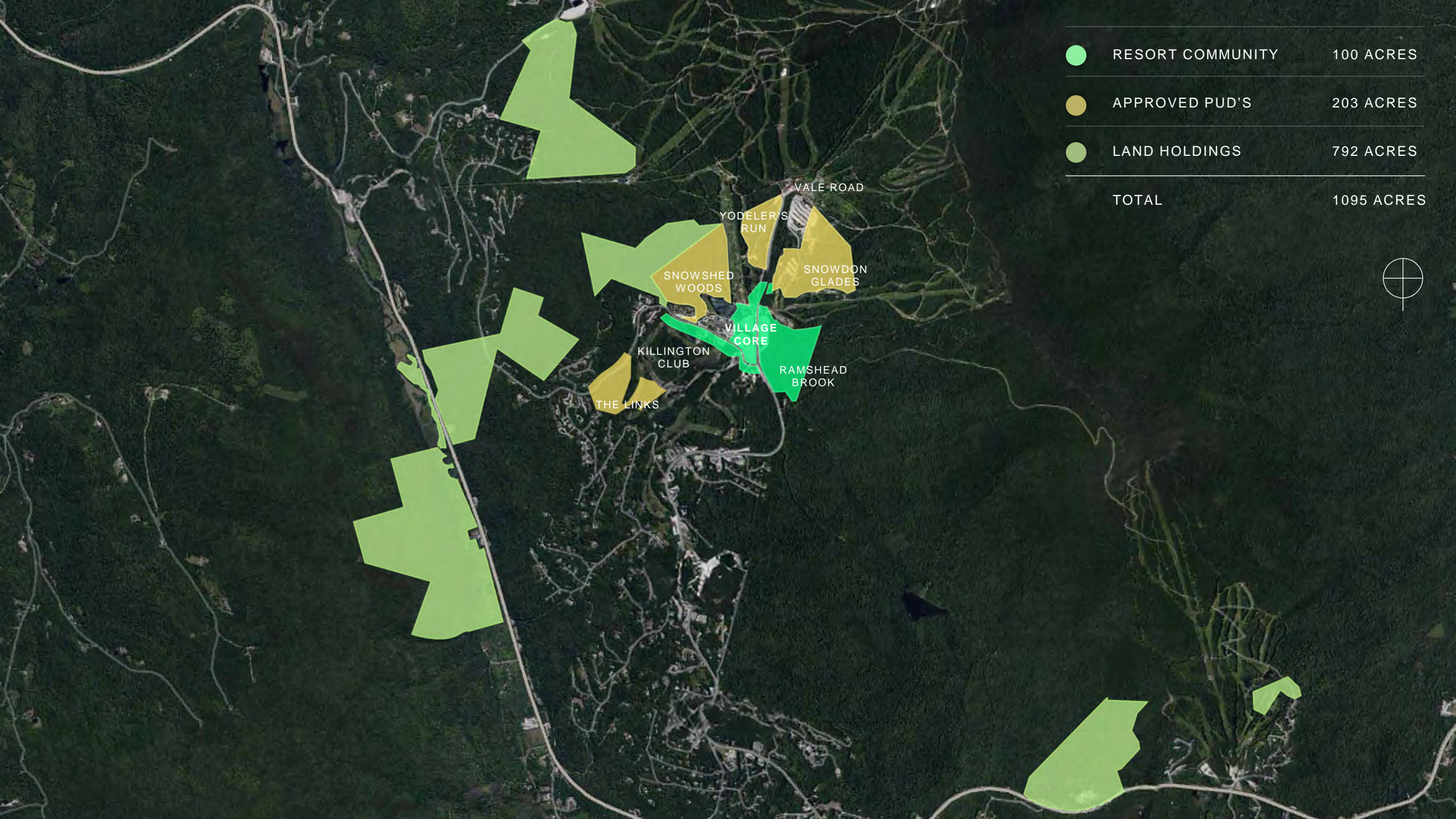





Vermont Land Use Review Board
October 2025



An aerial photograph of a mountain resort during winter. The scene is dominated by snow-covered slopes and dense evergreen forests. Several ski runs are visible, with ski lift towers and cables extending across the terrain. In the background, a prominent mountain peak is visible, topped with a small structure. The sky is a clear, pale blue, suggesting a bright day. The overall atmosphere is serene and majestic.

Great Gulf will redefine mountain living with a visionary residential resort community – rich with all the amenities and adventure for a luxurious escape.



	RESORT COMMUNITY	100 ACRES
	APPROVED PUD'S	203 ACRES
	LAND HOLDINGS	792 ACRES
TOTAL		1095 ACRES



ACT 250 APPROVED MASTER PLAN



The information shown here is for illustrative purposes only, and may change without notice.

HART HOWERTON
PLANNING ARCHITECTURE
LANDSCAPE ARCHITECTURE

© 2014 HART HOWERTON
PLANNING ARCHITECTURE AND LANDSCAPE ARCHITECTURE, LLC
The design and content shown herein are the property of Hart Howerton. The design and content shown herein are subject to the approval and consent of the State of Vermont.



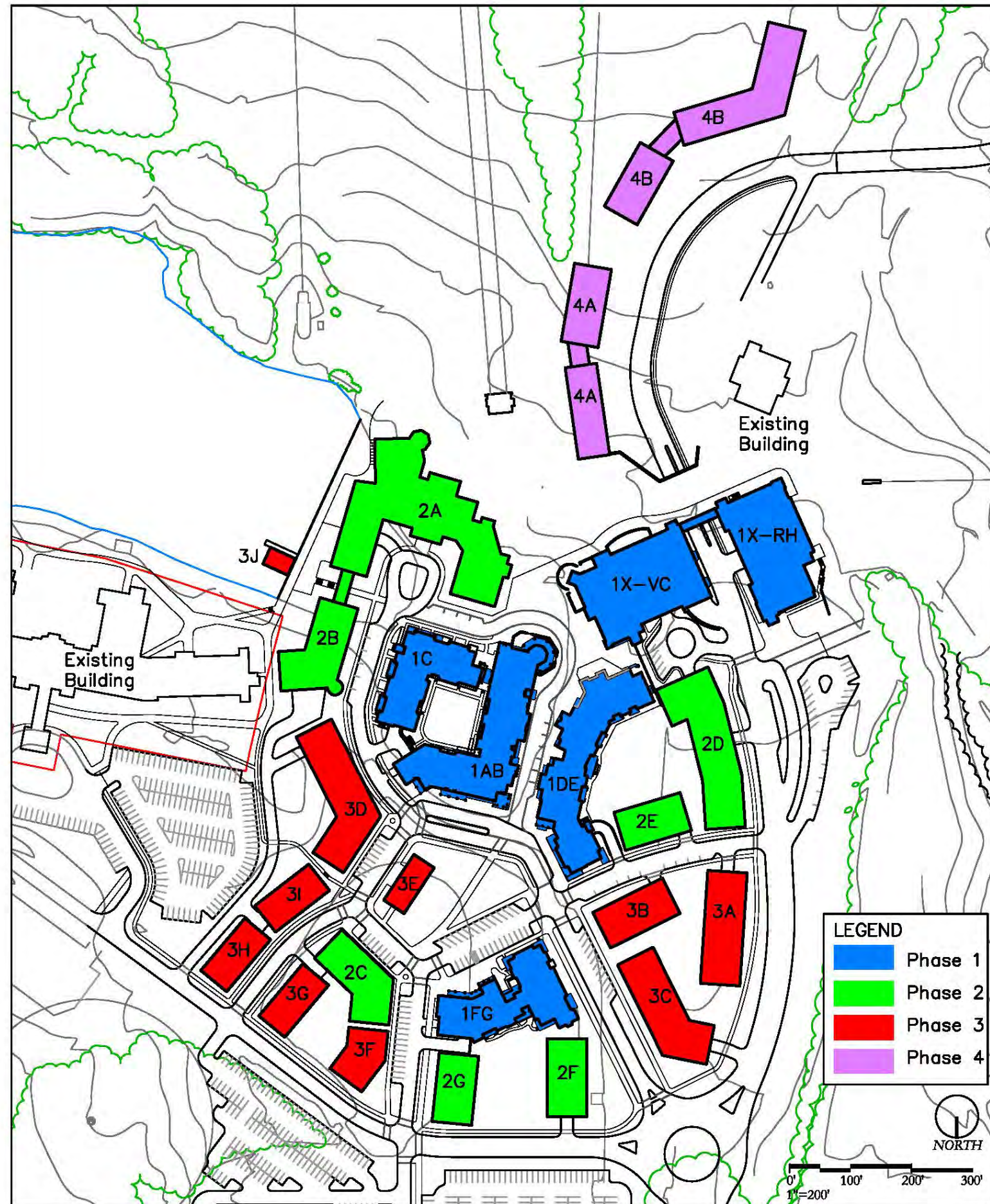
Illustrative Master Plan

November, 2014

**ACT 250 APPROVED
HART HOWERTON
VILLAGE MASTER PLAN**



**CONCEPTUAL
HART HOWERTON
VILLAGE CORE
PHASING PLAN
(PHASE 1 FULLY APPROVED)**



**SAFDIE ARCHITECTS
MASTER PLAN**



**RAMSHEAD
NEIGHBORHOOD**

ESTATE HOMES (0.5 ACRE LOTS)

32

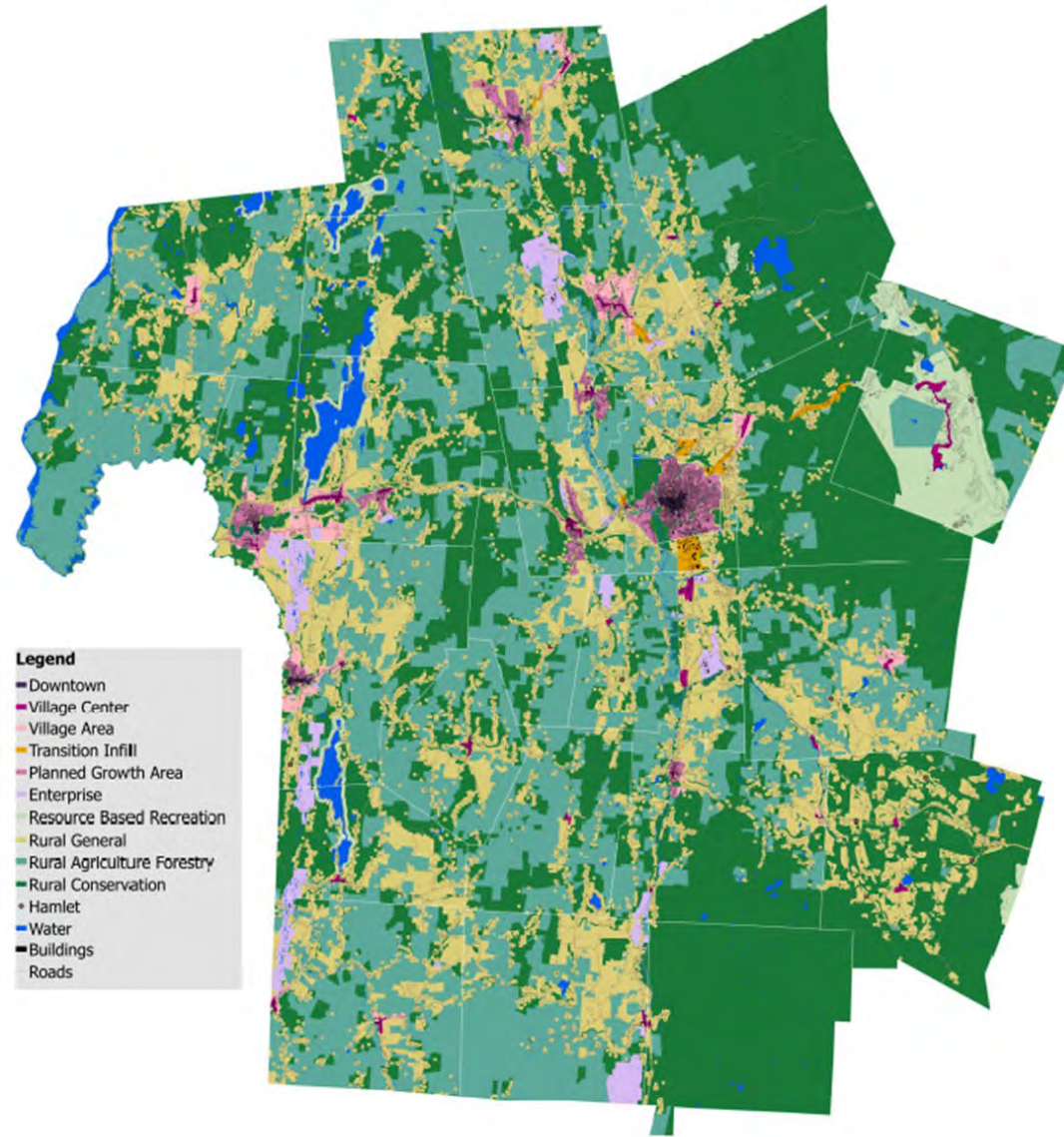




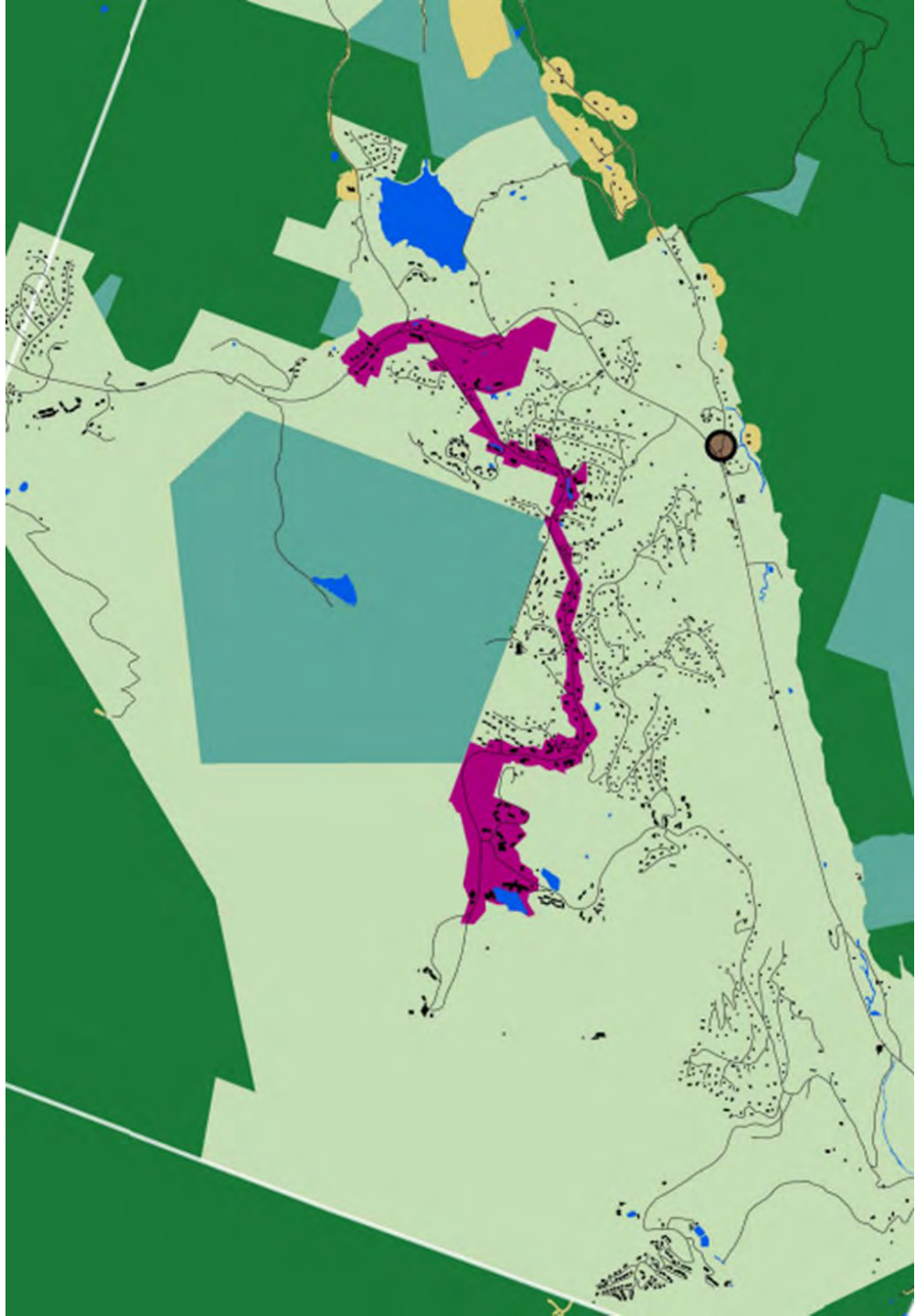


DRAFT REGIONAL FUTURE LAND USE MAP

AUGUST, 2025 DRAFT MAP



- Legend**
- Downtown
 - Village Center
 - Village Area
 - Transition Infill
 - Planned Growth Area
 - Enterprise
 - Resource Based Recreation
 - Rural General
 - Rural Agriculture Forestry
 - Rural Conservation
 - Hamlet
 - Water
 - Buildings
 - Roads



A resort community like no other



Adventure



Entertainment



Wellness



Family



Farm & Ranch



Killington Village Development

Vermont Land Use Review Board
October 2025



October 2025

